
810 Android Main-board Specification

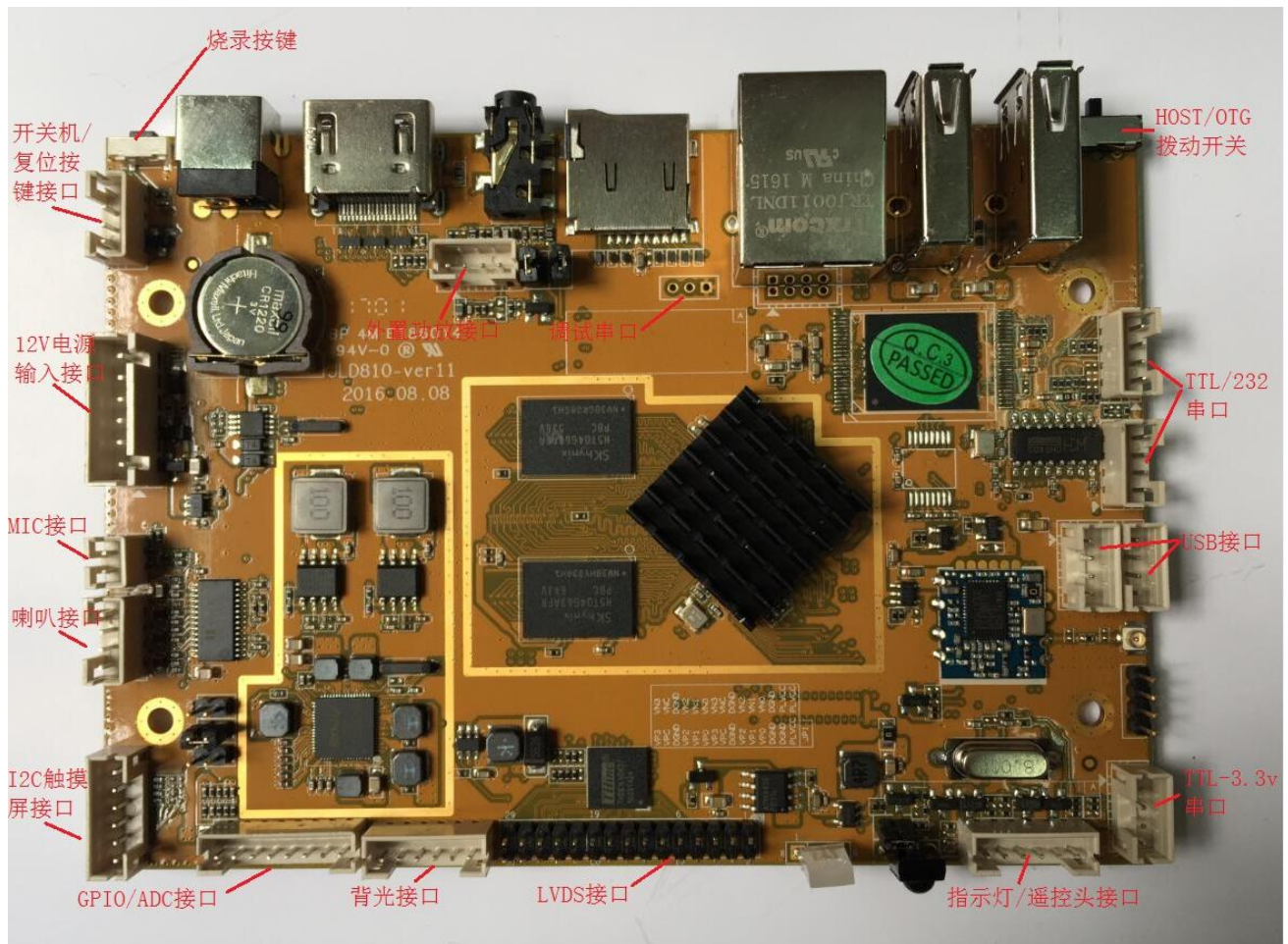
Content

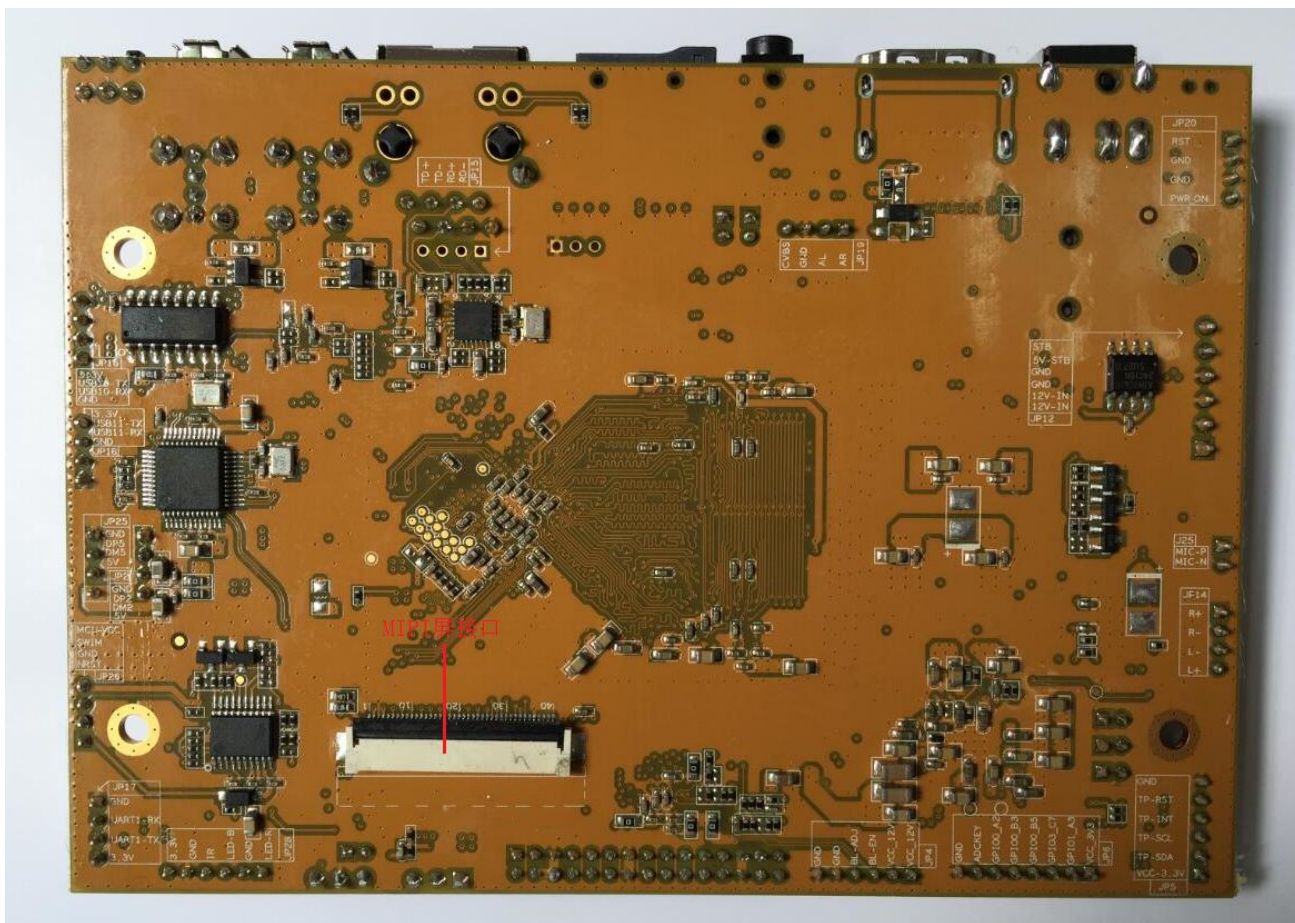
Chapter 1. Product Description.....	错误！未定义书签。
Chapter 2. Main Board Control Port Connection.....	错误！未定义书签。
Chapter 3. Datasheet.....	错误！未定义书签。
Chapter 4. Control Port Definition.....	错误！未定义书签。
Chapter 5. Specification.....	错误！未定义书签。

Chapter 1. Product Description

JLD810 main board use RK3128quad core ARM Cortex-A7 type CPU , Frequency 1.3G,with Android 4.4 OS , With memory 1GB DDR3 and 8GB INAND。 The main-board support dual 8bit LVDS interface and dual 8 bit MIPI interface LCD display. LVDS output max resolution is 1920*1080 , support to driver different size of LCD display, Main board support I2C port touch screen LCD monitor. 4*USB interface and 3*UART extended interface. The main-board integrates Ethernet, headphone, HDMI, WiFi, and Bluetooth, and supports remote timer switching for easy device management.

Chapter 2. Main-board control port connection





Chapter 3 Data-sheet

Specification	
CPU	RK3128 ,quad core, frequency 1.3 GHz
RAM	1GB(Optional 512M/2GB)
Built-in	NAND FLASH/EMMC 8GB (optional in 4GB/16GB)
Max Resolution	1920*1080
OS	Android 4.4
Network	Support WiFi,Wireless peripheral extension
Bluetooth	Optional
Ethernet Port	10/100M
Video Format	Support AVI (H.264、DIVX、DIVX、XVID) , rm, rmvb, MKV (H.264、DIVX、DIVX、XVID), WMV, MOV, MP4 (.H.264、MPEG、DIVX、XVID), DAT (VCD format), VOB (DVD format), PMP,MPEG, .MPG, , FLV (H.263, H.264), ASF , TS, TP, 3GP, MPG etc. 30 types above.
Picture Format	Support BMP、JPEG、PNG、GIF
USB2.0Interface	2*USB HOST Interface、2*USB Interface
COM	3* (1*TTL, 2 个 TTL/232 optional)
Exterior Slot	TF Card
HDMI output	HDMI Port
LVDS output	Dual 8 bit LVDS output, Max.Resolution 1920*1080
Analog audio output	Supports left and right channel output, built-in dual channel 4R/20W, 8R/10W power amplifier
RTC	Support real time clock
Timer switch	Support
Extension ports	Touch button: switch On&Off
System Upgrade	Support USB upgrade TF upgrade
Power Supply	12V DC

Chapter 4. Interface Definition

◆ Power Input Interface(12V)

Item	Type	Description
1	DCIN-12V	12V input
2	DCIN-12V	12V input
3	GND	Ground wire
4	GND	Ground wire
5	5V-STB	Standby 5V input
6	STB	Standby signal output

◆ Backlight Control Port

Item	Type	Description
1	12V	12V Input
2	12V	12V Input
3	BL-EN	Backlight enable control
4	BL-ADJ	Backlight brightness control
5	GND	Ground wire
6	GND	Ground wire

◆ GPIO Control Port

Item	Type	Description
1	VCC	3.3V output
2	GPIO1	GPIO Input/Out1
3	GPIO2	GPIO Input/Out2
4	GPIO3	GPIO Input/Out3
5	GPIO4	GPIO Input/Out4
6	GPIO5	GPIO Input/Out5
7	ADC-KEY	ADC Signal Light
8	GND	Ground Wire

◆ LVDS Interface

Item	Type	Description
1	VCC	LCD Power output , +3.3v/+5V/ +12V optional, Select by voltage wire cap
2		
3		

4	GND	Ground Wire
5		
6		
7	0VP0	Pixel0 Negative Data (Odd)
8	0VN0	Pixel0 Positive Data (Odd)
9	0VP1	Pixel1 Negative Data (Odd)
10	0VN1	Pixel1 Positive Data (Odd)
11	0VP2	Pixel2 Negative Data (Odd)
12	0VN2	Pixel2 Positive Data (Odd)
13	GND	Ground Wire
14	GND	Ground Wire
15	0VPC	Negative Sampling Clock (Odd)
16	0VNC	Positive Sampling Clock (Odd)
17	0VP3	Pixel3 Negative Data (Odd)
18	0VN3	Pixel3 Positive Data (Odd)
19	1VP0	Pixel0 Negative Data (Even)
20	1VN0	Pixel0 Positive Data (Even)
21	1VP1	Pixel1 Negative Data (Even)
22	1VN1	Pixel1 Positive Data (Even)
23	1VP2	Pixel2 Negative Data (Even)
24	1VN2	Pixel2 Positive Data (Even)
25	GND	Ground Wire
26	GND	Ground Wire
27	1VPC	Negative Sampling Clock (Even)
28	1VNC	Positive Sampling Clock (Even)
29	1VP3	Pixel3 Negative Data (Even)
30	1VN3	Pixel3 Positive Data (Even)

Notes : Be sure to confirm that the voltage selection jumper cap is configured correctly before inserting the LVDS screen cable! ! !

◆ **Serial port expansion 1 (TTL/232 level)**

Item	Type	Description
1	VCC-3V3	3.3V output
2	TTL-1-TX	TX
3	TTL-1-RX	RX
4	GND	Ground Wire

◆ **Serial port expansion 2 (TTL /232level)**

Item	Type	Description (TTY-USB10)
1	VCC-3V3	3.3V Output
2	232-6-TX	TX
3	232-6-RX	RX
4	GND	Ground Wire
Item	Type	Description (TTY-USB11)
1	VCC-3V3	3.3V output
2	232-7-TX	TX
3	232-7-RX	RX
4	GND	Ground Wire

◆ **USB*2 Interface**

Item	Type	Description
1	5V	5V output
2	D+	DP
3	D-	DM
4	GND	Ground Wire

◆ **MIC Interface**

Item	Type	Description
1	MIC+	Microphone interface+
2	MIC-	Microphone interface-

◆ **Mode audio and video interface**

Item	Type	Description
1	CVBS	Analog video output
2	GND	Ground Wire
3	AL	Audio output left
4	AR	Audio output right

◆ **Audio interface (can directly drive the speaker)**

Item	Type	Description
1	L+	Audio output left+
2	L-	Audio output left-
3	R-	Audio output right-
4	R+	Audio output right+

◆ **Power reset button interface**

Item	Type	Description
1	PWR	Power button input
2	GND	Ground Wire
3	GND	Ground Wire
4	RST	Reset button input

◆ **Indicator light and remote head interface**

Item	Type	Description
1	LED_R	Standby display
2	VCC -MCU /GND	3.3V input/Ground Wire
3	LED_B	Working Indicator light
4	IR-OUT	Remote signal input
5	GND	Ground Wire
6	VCC -MCU	3.3V Output

◆ **Electrical performance**

Item		Mini.		Max.
Input Voltage	Power	--	12V	--
	Ripple	--	--	50mV
Current	Working Current	--	350mA	---
	Standby Current	--	---	---
Environment	Relative Humidity	--	--	80%
	Working Temperature	0°C	--	50°C

Chapter 5. Specification

◆ PCB Dimension

Reference DXF files

Size : 87.7*123.8mm

Thickness: 1.6mm

Screw hole specification : ϕ 3.2mm x 4

Back Box 3D picture

