

## Testing Bar LCD Steps

1. Turn on the power and check if the yellow light indicated by the arrow in Figure 1 is on. Check whether the power board is normally powered on or not.

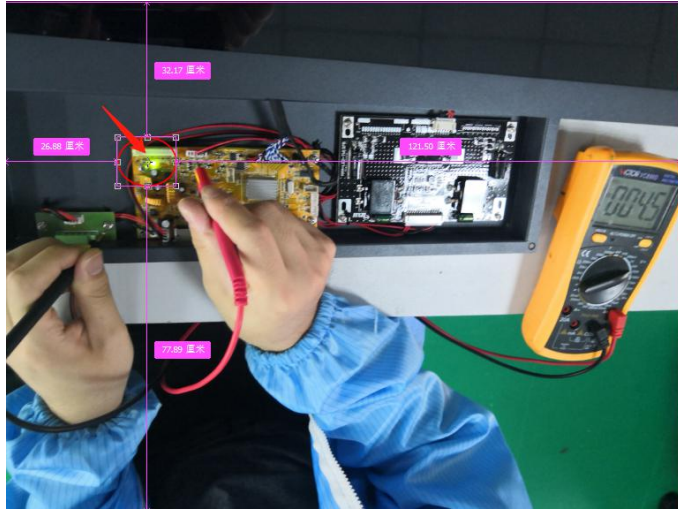


Figure 1

- A. If yellow light on, the power normal input is 24V
- B. If yellow light off, please confirm according to the figure 2 to test the input power voltage.

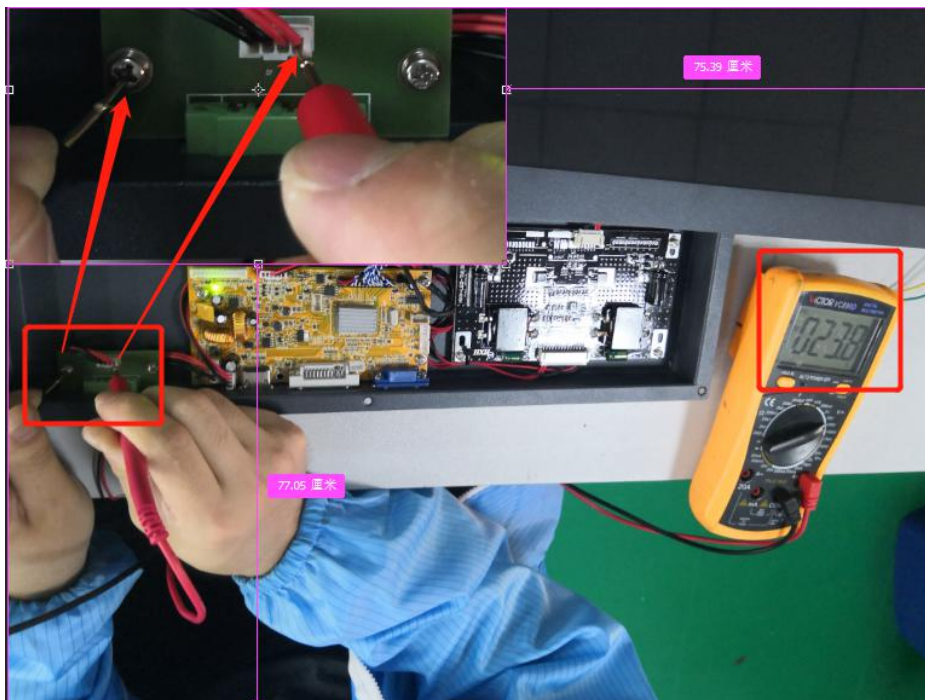


Figure 2

If the Step 1 yellow light on, we can confirm the input power is 24V, and then to check whether the yellow motherboard has a screen voltage output of 12V. Test method as figure 3:

# XIAMEN XINSENYUE TECHNOLOGY CO.,LTD

Website: [www.widelcd.com](http://www.widelcd.com) Email: [info@xinsenyue.com](mailto:info@xinsenyue.com) Skype: qiu.kevin3

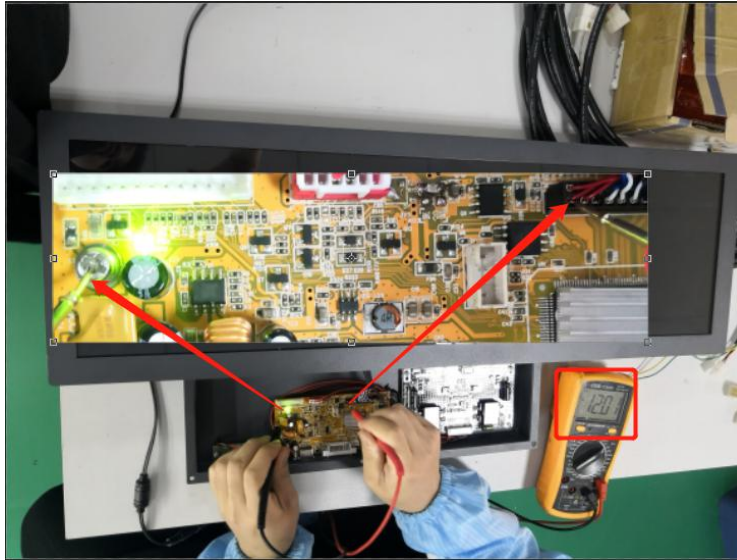


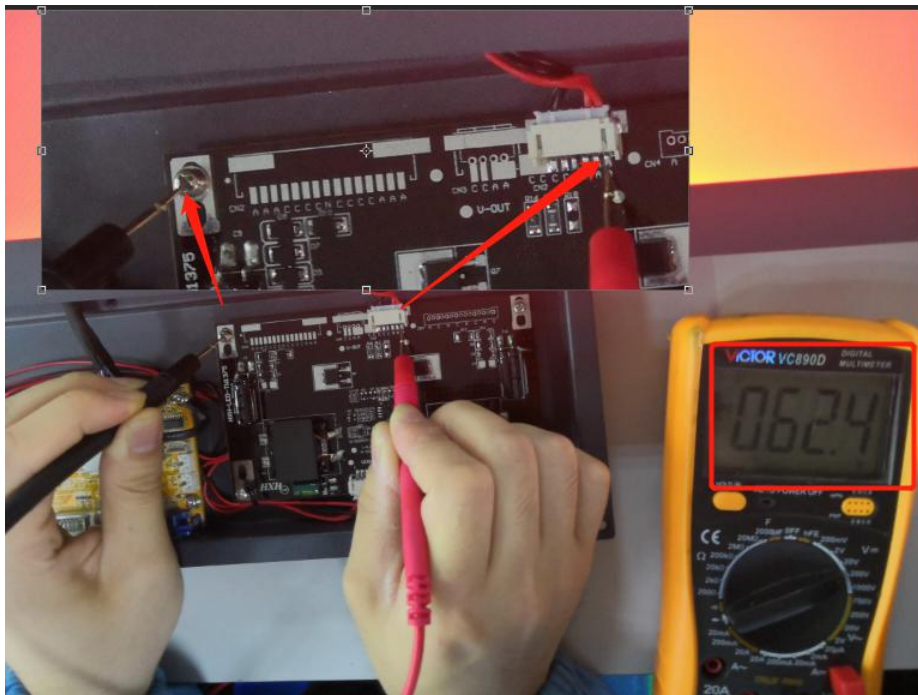
figure 3

If the test has a 12V voltage output, there is no problem with the motherboard;

If the test does not have a 12V output, the motherboard is broken.

If the motherboard is bad, you need to replace the motherboard.

2. If it is confirmed that the motherboard is not damaged (the test has 12V voltage output), please test whether the power board has power supply to the LED backlight. the LED backlight voltage is about 60V. The test method show as Figure 4



A. If the power strip has an output voltage (60V) to LED backlight, the LED backlight will light up normally

B. If the power board tests no output voltage at this point, the power board is damaged and a new constant current board needs to be replaced

C. If the voltage of the power supply board is 24V, the ADJ/ON-OFF drive of the mainboard is faulty. It is recommended to replace the mainboard.

## **XIAMEN XINSENYUE TECHNOLOGY CO.,LTD**

Website: [www.widelcd.com](http://www.widelcd.com) Email: [info@xinsenyue.com](mailto:info@xinsenyue.com) Skype: qiu.kevin3

1. If there is no problem with the motherboard (with a screen voltage of 12V output) and there is no problem with the power board (60V output), you need to replace the glass T-CON board.
2. If you just need to replace the power supply board or the main board, the customer can operate it by himself; if you need to replace the T-CON board, you must send the screen back to our company and we will carry out after-sales maintenance.